



## Contents

|  |    |
|--|----|
| Contents .....   | 1  |
| Early Winter Update .....  | 1  |
| Parkdale Community Association Board of Directors .....              | 2  |
| PCA Office Hours .....   | 2  |
| Save the Date, Sat, Feb 1, 2014! .....                               | 2  |
| Bikes Seized in Downtown Operation .....                             | 2  |
| Why Join the PCA? .....  | 3  |
| Join the PCA.....  | 3  |
| Planning Events with the Federation Coming Up! .....                 | 4  |
| Be a Partner in Crime Prevention.....                                | 5  |
| March Newsletter.....  | 5  |
| PCA Newsletter Route Available .....                                 | 5  |
| PCA Facilities for Rent.....   | 5  |
| Calgary Northside Soccer.....  | 5  |
| Alberta Health Services:   |    |
| February is Heart Month .....  | 6  |
| Louise Riley Library - February 2014 .....                           | 7  |
| Parkdale Community Association Membership Application Form.....      | 8  |
| Parkdale Farmers' Market .....                                       | 9  |
| PCA Facilities Rental: Information and Rental Contract Estimate..... | 10 |
| Parkdale Newsletter Advertising Form .....                           | 11 |
| Advertising in the PCA Newsletter .....                              | 12 |
| Photo Credits.....   | 12 |
| Calendar of Events.....  | 12 |



## Early Winter Update

*By David Wing, Editor*

Welcome to our first issue of 2014.

By now, you should have received the January issue of the Parkdale Community Association (PCA) Newsletter. If you have not received the newsletter by now, please contact the PCA Office (contact information is on page 2) or David Wing at 270-8579 (e-mail: [wingd@telus.net](mailto:wingd@telus.net)).

The latest information on Saturday Night Fever is on page 2. If your bicycle has been stolen, please see page 2. It is PCA membership renewal time. The reasons for joining the PCA are on page 3. A membership application form is on page 8. The Federation of Calgary Communities (FCC) is sponsoring a series of planning events (page 4). The FCC is also working with the Calgary Police Service in holding a series of workshops on crime prevention (page 5). The submission deadline for the next (March) issue of the PCA Newsletter is Monday, February 10 (page 5). A PCA Newsletter route is available if you are interested or want more information (page 5). Some of the features of our community centre are listed for potential renters (page 5). Page 5 also contains information on Calgary Northside Soccer. The latest submission from Alberta Health Services is on Heart Month (page 6). The February submission from the Louise Riley Library is on page 7. Information on the Parkdale Farmers' Market is on page 9. Pages 10 and 11 contain forms for renting the PCA Facilities and advertising in the PCA Newsletter, respectively. For upcoming community activities, please see the Calendar of Events on page 12.

# Parkdale Community Association Board of Directors

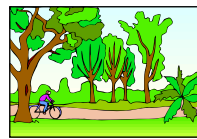
|   |                      |                     |                             |
|---|----------------------|---------------------|-----------------------------|
| President (Executive) .....             | Darcy Morgan.....    | 209-1255.....       | darcyhmorgan@gmail.com      |
| Vice President (Executive) .....        | Trevor Davison ..... | 695-7521 .....      | trevor.davison@o2design.com |
| Treasurer (Executive) .....             | Paul Neave.....      | 270-4531 .....      | paulneave@shaw.ca           |
| Secretary (Executive) .....             | Quentin Enns .....   | 247-8930 .....      | qenns@telus.net             |
| Past President .....                    | Brian Franks .....   | 681-4811 .....      | yyctubesteaks@gmail.com     |
| Director, Communications .....          | Colin Brandt .....   | 988-3632 .....      | colinbrandt@gmail.com       |
| Director, Tree Huggers .....            | Kara Hallett .....   | 630-5965 .....      | parkdaletreehuggers@live.ca |
| Director, Community Garden .....        | Audrey Smith.....    | 283-2457 .....      | audreysmi@gmail.com         |
| Director .....                          | Marcel Hebert.....   | (587)229-1981 ..... | Hebertm@shaw.ca             |
| Director, Farmers' Market .....         | Steve Lemp .....     | 283-0130 .....      | s.lemp@shaw.ca              |
| Director, Healthy Aging & Seniors ..... | Ruby Miller .....    | 283-8332 .....      | r.e.miller@shaw.ca          |
| Director, Soccer .....                  | Traci Nayeri .....   | 829-2567 .....      | traci@tracinayeri.com       |
| Director, SSASDC/SSASPG.....            | Vince Walker .....   | 270-3207 .....      | vnwalker@telusplanet.net    |
| City Representative (non-voting).....   | Gini Clark .....     | 221-3981 .....      | virginia.clark@calgary.ca   |



## Parkdale Community Association (PCA) Office Hours

The PCA Office is usually open 9:00 am to 3:00 pm Monday to Friday. Please call or e-mail and leave a message if you need support from the PCA Office. The PCA Office is closed on all statutory holidays.

Telephone: 283-5767  
 E-mail: [office@parkdalecommunity.com](mailto:office@parkdalecommunity.com)  
 Address: 3512 - 5 Avenue NW, Calgary, AB T2N 0V7



## Bikes Seized In Downtown Operation

*By Janice Paskey, West Hillhurst Community Association*

As part of a two-month investigation into the theft of bicycles in the downtown core, police have recovered over 50 bikes and laid charges against 17 people.

The operation, run predominantly over the summer months by the District One Mountain Bike Unit, District Operations Team (DOT), Beat Unit and patrol officers, focused on the downtown core and the Beltline, two areas that witnessed a significant increase in bicycle thefts following the floods.

The bicycles stolen and recovered ranged in value, however, some were worth as much as \$5,000.

Police believe that many bicycle thefts go unreported. As such, they currently have approximately 250 bicycles that have been recovered from across the entire city that they have not been able to return to the rightful owners.

If you believe your bicycle was stolen, you are encouraged to call police with as many details as possible so they can be cross-referenced to those recovered.

To provide information or report your bicycle stolen, please call police at 266-1234 or Crime Stoppers anonymously using any of the following methods:

TALK: 1-800-222-8477

TYPE: [tttTIPS.com](http://tttTIPS.com)

TEXT: tttTIPS to 274637

View this online at: <http://newsroom.calgary.ca/news/bikes-seized-in-downtown-operation>



## Save the Date Sat, Feb 1, 2014!

*By Tanya Massey*

Parkdale's Annual Saturday Night Fever Fundraiser has been postponed to February 1, 2014 at 7:00 pm. Get ready to dance the night away with DJ Jorge and support your community association. Tell your friends this is one party they don't want to miss! Dressing up 70s is optional but you really don't want to miss out on the fun.

Volunteers are needed so please contact me if you want to help make this event happen. I am looking for donations of food, beverages, raffle prizes and door prizes. Please call Tanya Massey at 283-1839 to volunteer or for more information.

Thanks for your support!



## Why Join the PCA?

Your community association is a group of volunteers who work to make your community a great place to live for residents of all

ages. It provides: a voice for the community on changes and new developments that affect residents, information, programs and support, low cost recreation, sports and social activities and discounts for members on various goods and services.

You can become involved with your community association in two important ways:

- a) Become a member – when you purchase a membership in your community association, your dues are used to offer you and your neighbours many programs and activities.
- b) Become a volunteer – Community Associations rely on volunteers to make things happen. There are many ways you can volunteer to make your community a more enjoyable place to live. At the same time you will make new friends and learn skills.

## Ten Good Reasons To Join Your Local Community Association

1. Programs and Services for all Ages – Preschoolers to Seniors  
Community Associations offer programs directly or provide support to other organizations offering programs such as girl guides. Many associations also partner with The City to offer such programs as Park n Play and Youth Drop-in programs. Community associations may also provide support services to residents in need such as snow shovelling for seniors.

### 2. Sports

Community associations offer organized sport opportunity for children and youth such as baseball, basketball, skating, hockey, soccer, ringette as well as many others.

### 3. Community Safety

Block Watch, Block Parent and bicycle safety programs are examples of how community associations ensure safety in the neighbourhood.

### 4. Special Events

Many events are provided throughout the year which provides families an opportunity to meet others in the community and have some fun. Events include Stampede Breakfasts, craft fairs, skating parties, recycling days, and many others.

### 5. Awareness and Responsive to Planning and Development Issues

The community association makes every effort to keep track of development and planning proposals in the areas such as transportation, roads, park and playground development, and traffic issues. The City often consults with the community association on these issues .

### 6. Community Newsletter

The community association communicates to the residents the activities, programs and services that are happening in the community through a regular newsletter.

### 7. Facility Operations and Rentals

Many community associations operate a facility that is available for programs, meetings, social and private functions. Outdoor ice rinks and tennis facilities are also maintained for the benefit of the community residents.

### 8. Home and Auto Insurance Discounts

Membership does have its benefits. Toole Peet Insurance will provide special group rates for all community association members. Call Normand at 245-1177 for your quote today.

### 9. Representing the Community on Regional Committees and Initiatives

Community association designates represent the community on regional issues of interest such as major parks, major infrastructure projects in the area or social issues.

### 10. Improving the Quality of Life

Community associations are created by individuals who want to improve the quality of life for themselves and others in the community. Share the feeling of community pride - become a community association member and volunteer.

Join today by contacting the Parkdale Community Association Office (283-5767 or e-mail [office@parkdalecommunity.com](mailto:office@parkdalecommunity.com)).

**Community Associations are a great place to belong!**

*(Reproduced with permission of the Federation of Calgary Communities)*



## Join the PCA

*By Leslie Cole, Membership Marketing, PCA*

The Parkdale Community Association (PCA) wants you! New members or renewal, residents or non-residents, family

or individuals are all welcome.

The PCA is an integral part of our Parkdale community. Your PCA membership demonstrates support for our special neighbourhood and its unique history; and helps us create a vision for the future, and to maintain the integrity and health of our community.

Joining and being involved in our community association has many benefits including:

- Access to social, recreational and educational activities,
- A chance to build relationships with people who live around us,
- Feeling good about contributing back,

*Continued on page 4*

Continued from page 3

- Creating a greater sense of involvement and support for the community of Parkdale,
- Access to our community hall space at a discounted rate,
- Having a voice in the planning and development issues that affect Parkdale,
- Input into program offerings of the PCA, and
- In general, the opportunity to help make Parkdale a better place to live.

PCA offers a variety of programs and sports/recreational activities to our members including: soccer, skating, healthy aging (just beginning), moms and tots playgroup, Children's Christmas Party, children's art and theatre. The PCA is also a place where you can participate in special areas of interest such as heritage, communications, e.g., this newsletter, governance, volunteer leadership, finance, etc.

### Membership Fees

Resident (voting) and non-resident (non-voting)

Family - \$20.00

Individual - \$15.00

Senior - \$5.00 (per member)

Purchase your membership by calling the PCA Office, 283-5767, or e-mail [office@parkdalecommunity.com](mailto:office@parkdalecommunity.com). A PCA Membership Application Form is on page 8.

We look forward to meeting you.



## Planning Events with the Federation Coming Up!

*Submitted by Judy Hoad, Chair, Planning and Development Committee, PCA*

The FCC coordinates and shares events that are useful, interesting and important for communities. In this update, you can find information on an information session on locating cell towers, a Heritage Roundtable event on brick and Baconfest. Read on!

### Setting the Cell Tower Siting Process Straight!

Cell phones towers are increasingly an issue in our communities. Why do we have so many? Why must they be placed in residential neighbourhoods? How can we affect or have a say in their placement? What role does the City play and what authority does the City actually have concerning cell towers?

For the answer to these questions, and to ask others you may have regarding cell towers, please join us for a short presentation and a question and answer session with The City of Calgary's Antenna

Services unit.

Date: Tuesday, February 4, 2014 from 7:00 to 9:00 pm, sign-in starts at 6:30 pm.

Location: Inglewood Community Association Hall, 1740 - 24 Avenue SE

Please register (<https://calgarycommunities.com/event/setting-the-cell-tower-siting-process-straight/>) to reserve your seat and a treat!

### BEAUTIFUL BRICK! A Look at Traditional Brick and Brick Masonry

Join Heritage Roundtable for a free evening of learning and networking at our Second Heritage Trades Roundtable Brick!

Meet some of the people who make the preservation and maintenance of the buildings and features we love possible. From chimneys to châteaux, develop an appreciation of traditional building methods and materials.

Historic brick production and industry in Alberta – Malcolm Sissons, President, I-XL Industries Ltd., a fourth generation family business founded in 1912 as the Redcliff Pressed Brick Co.

Current brick masonry trade, traditional methods – Neil Puype, principal of a heritage building consulting company and fifth generation brick and stone mason

Early brickyards and building with brick in Calgary – Marilyn Williams, Heritage Roundtables Steering Committee

There will be an opportunity for discussion, and time before and after the talks to enjoy refreshments and expand your heritage network.

Location: Rideau Park School Gymnasium

Date: Tuesday, January 28, 2014, starts at 7:00 pm, doors open at 6:30 pm

Cost: Open to the public and free of charge!

To register, please go to <https://calgarycommunities.com/event/heritage/>.

### Baconfest – A Film Festival Celebrating Renowned Architect and Planner, Ed Bacon

Planning, Development & Assessment of The City of Calgary is kicking off 2014 with Baconfest – a film festival exploring a film series by renowned architect and planner, Ed Bacon (also Kevin Bacon's father)! In addition to the Bacon series, the festival will also have select other screenings – 11 film screenings in total over seven nights throughout January and February. The series is, in part, meant to educate the public about planning and the opportunities that come with change. The event is in partnership with Alberta Professional Planners Institute, DIRTT and the Calgary Public Library. This is a free event and everyone is welcome – professionals and the public alike.

Where: Dutton Theatre, Central Library, 616 Macleod Trail SE

When: Events will run from 6:00 – 8:00 pm on Wednesdays in January on the 8, 15, 22 and 29 and February on the 12, 19 and 26. Please go to <http://www.calgary.ca/PDA/LUPP/Pages/Current-studies-and-ongoing-activities/Baconfest.aspx?redirect=/baconfest> for more information.



## Be a Partner in Crime Prevention!

The Federation of Calgary Communities, in partnership with the Crime Prevention Team at the Calgary Police Service, are working together to offer tips and tools on crime prevention and safety issues in Calgary!

The NEW Partners in Crime Prevention Workshop series is geared towards helping community volunteers learn valuable information about crime prevention and safety issues in their neighbourhoods from our trusted partners, The Calgary Police Service. These workshops are FREE to the public. For more information and to register, visit <http://www.calgarycommunities.com/events/month/>.

### Partners in Crime Prevention Workshop #1: The Hub Messaging System and Good Witness Program

Date: Tuesday, February 4, 2014 at 7:00 pm

Location: Dover Community Association, 3133 – 30 Avenue SE

Cost: Free!

### Partners in Crime Prevention Workshop #2: Cybercrime

Date: Wednesday, March 5, 2014 at 7:00 pm

Location: Glamorgan Community Association, 4207 – 41 Avenue SW

Cost: Free!

### Partners in Crime Prevention Workshop #3: Graffiti

Date: Thursday, April 3, 2014 at 7:00 pm

Location: Hillhurst Sunnyside Community Association (Hearth Room), 1320 - 5 Avenue NW

Cost: Free!

### Partners in Crime Prevention Workshop #4: Crime Prevention through Environmental Design (CPTED)

Date: Wednesday, May 7, 2014 at 7:00 pm

Location: Acadia Recreation Complex, 240 – 90 Avenue SE

Cost: Free!

## March Newsletter



The deadline for submissions for the March, 2014, issue of the PCA Newsletter is 5:00 pm, Monday, February 10, 2014. For more information on submissions of material or ads, please contact David Wing, Editor (270-8579 or [wingd@telus.net](mailto:wingd@telus.net)).

## PCA Newsletter Route Available



If you want exercise and possibly some additional income (children and seniors are paid \$0.10 per issue delivered) in getting community news out to your neighbours, please consider becoming a delivery person for the PCA Newsletter. For more information, please contact David Wing, Editor (270-8579 or [wingd@telus.net](mailto:wingd@telus.net)).

## PCA's Facilities for Rent

- Pierson Hall: 3,250 sq feet, capacity 315 standing meeting, 250 dining seated at tables,
- Outdoor skating rink.



For more information, please contact the PCA Office at 283-5767 or e-mail [office@parkdalecommunity.com](mailto:office@parkdalecommunity.com). An updated price list as been uploaded to our website and is reproduced on page 10.



### U8 to U18 REGISTRATION 2014 Outdoor Soccer

On-Line Pre-Registration available February-March 2014  
[www.NorthSideSoccer.ca](http://www.NorthSideSoccer.ca)

Outdoor soccer registration is available for all ages from six (U8) to eighteen years old (U18) – birth years 1996 to 2007 and available to players from all communities.

For registration details and information about our City league program, please go to our web site or email us:

Website: [www.NorthSideSoccer.ca](http://www.NorthSideSoccer.ca)  
Email: [Registrar@NorthSideSoccer.ca](mailto:Registrar@NorthSideSoccer.ca)  
or [info@NorthSideSoccer.ca](mailto:info@NorthSideSoccer.ca)



Emergency  
Medical  
Services

## February Is Heart Month



Do you know the signs and symptoms of a heart attack and what to do if someone experiences these? Knowing can make the difference between life and death.

Recognizing and responding immediately to the warning signs of a potential heart attack can significantly improve survival and recovery. **February is Heart Month** - take the time to be heart safe and learn how you can reduce your risk.

### Know the signs of a heart attack

(Any or all of these signs & symptoms may occur)

- Chest pain described as crushing, squeezing, pressure or chest heaviness;
- Pain that moves beyond the chest such as shoulder, arm, neck or jaw pain;
- Shortness of breath, sweating or nausea and vomiting.

### Reduce your risk

Heart attack risk factors include:

- Obesity
- Sedentary lifestyle
- Smoking
- High cholesterol
- Age / Gender
- Family history

Speak with your doctor about how to treat your modifiable risk factors and learn to be heart safe.

### What to do when seconds count

- Call 9-1-1 immediately. Early treatment can greatly reduce heart damage and make the difference of life and death.
- Treatment starts the moment EMS arrives. Paramedics can provide oxygen, start an intravenous and perform an electrocardiogram (ECG).
- Paramedics can also administer important medications in the early minutes of a heart attack to lessen heart damage.
- During transport, EMS will also share information with the hospital so definitive treatment can begin immediately on arrival.
- Take a CPR/AED (automated external defibrillator) course. Training is widely available from many reputable organizations. It's easy, inexpensive, and only takes a few hours.

[www.albertahealthservices.ca](http://www.albertahealthservices.ca)

1904 14 Ave NW

Monday to Thursday 10:00 a.m. – 9:00 p.m.

Friday and Saturday 10:00 a.m. – 5:00 p.m.

Sunday 12:00 p.m. – 5:00 p.m.

# Louise Riley Library

## February 2014



### Mondays @ Your Library

**Computer Technology Coaching:** Drop in for one-on-one, volunteer help on using the Internet and Microsoft Office products.

Feb. 3 to Apr. 28, 2 - 4:00 p.m. *No Registration Required.*

**50+ Coffee and Conversation:** Join us for coffee, conversation and presentations of interest. Ages 50 and up. Mondays Feb. 10, Mar. 17, Mar. 24, Mar. 31, Apr. 14, Apr. 21, and Apr. 28, 2 - 3:30 p.m.

*No Registration Required.*

Special Presentations on:

Feb 3: **Traditional Chinese Medicine: Acupuncture**

Feb 24: **Write Your Story**

Mar. 3: **Introduction to Social Media**

Mar. 10: **Learn4Life: Intro to Free Online Courses**

### Tuesdays @ Your Library

**Wines of the World:** Join Michael Bigatinni as he takes you on a tour of some of the world's best loved wine regions.

Presented in partnership with Willow Park Wine and Spirits.

Tuesdays, 7 - 8:30 p.m. *Registration Required.*

Feb. 4: **France**

Feb. 25: **Chile**

**Galapagos Islands:** Explore the natural wonders of the Galapagos Islands with John McFaul of Alpenglow Nature Hikes. Tuesdays, Mar. 11, 7 - 8:30 p.m. *Registration Required.*

**Adult Book Club:** Call for details on specific books. Tuesdays, Mar. 4, Apr. 1, and Apr. 29, 7 - 8:30 p.m. *Registration Required.*

*Programs are FREE with your library card.*

Register in person, by calling 260-2620 or online at [www.calgarypubliclibrary.com](http://www.calgarypubliclibrary.com)

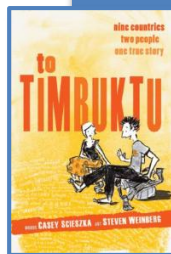
## Just for you:

**Story Pals:** Volunteers and their highly socialized dogs provide a calm, accepting presence for struggling readers to practice reading aloud. Ages 6 to 12, Thursdays, Feb. 6 to Mar. 13, 6:30 - 7:30 p.m. *Registration Required.*

**CyberSeniors Connect:** Learn from youth volunteers about the Internet, including Facebook and YouTube, Microsoft Office and more. Basic computer skills required. Ages 50 and up. Saturday, Feb. 8, 10:30 a.m. - 12:30 p.m. *Registration Required.*

**Teachers' Convention Activities:** Don't know what to do while school is out? Head on down to the Library for a variety of fun activities. Ages 6 to 12, Thursday, Feb. 13, 2 - 4 p.m. *No Registration Required.*

**Reader's Nook: "To Timbuktu"** by Casey Scieszka & Steven Weinberg. An illustrated travel memoir of the adventures of Casey and Steven, who met in Morocco, moved to China then went all the way to Timbuktu. It tells the story of their time spent teaching English, making friends across language barriers, researching, painting, and learning to be themselves wherever they are.



*See you soon!*



# PARKDALE COMMUNITY ASSOCIATION

3512 - 5th Avenue NW, Calgary AB, T2N 0V7  
 Tel: (403) 283-5787 E-mail: office@parkdalecommunity.com

## MEMBERSHIP APPLICATION FORM

|  |   |  |  |
|--|---|--|--|
| <b>Date:</b>   |   | <b>Membership No.:</b>   |  |
| <b>Full Name of Member(s), please include all household members over 18 years:</b>   |   |  |  |
| <b>Residential Home Address, including postal code:</b>  |   |  |  |
| <b>Phone:</b><br><i>Home</i> <i>Work/Cell (optional)</i>   |   | <b>E-Mail:</b>   |  |
| <b>Membership Category and Cost Per Year:</b>  |   |  |  |
| <u>Resident</u>  |   | <u>Associate Non-Resident (No Voting Privileges)</u>   |  |
| <input type="checkbox"/> Family \$20 (# over 18 years _____)   |   | <input type="checkbox"/> Family \$20   |  |
| <input type="checkbox"/> Individual \$15   |   | <input type="checkbox"/> Individual \$15   |  |
| <input type="checkbox"/> Senior \$5 (per member)   |   |  |  |
| <p>- Memberships run for one year from February 1 to January 31 of the following year.<br/>         - Please allow up to 3 weeks for your card to arrive (or contact the PCA office 403-283-5787 for pickup)</p>   |   |  |  |
| <b>Volunteers</b>  |   |  |  |
| <p>The Parkdale Community needs volunteers to continue to grow and thrive, and to enrich the community for everyone. Please indicate (✓) areas you would be interested in volunteering. A member of the PCA will be contacting you regarding your selection(s).</p>  |   |  |  |
| <b>General Services</b>  |   | <b>Special Subgroup Services</b>   |  |
| <b>Community Events &amp; Socials (CE)</b><br><input type="checkbox"/> AGM and Town Halls (A)<br><input type="checkbox"/> Children's Activities (CA)<br><input type="checkbox"/> Holiday Parties (HP)<br><input type="checkbox"/> Special Events (SE)<br><input type="checkbox"/> Farmers Market (FM)<br><input type="checkbox"/> Other (OT) _____ | <b>Healthy Aging &amp; Seniors (HS)</b><br><b>Sports and Recreation</b><br><input type="checkbox"/> Skating Rink (R)<br><input type="checkbox"/> Soccer (S)<br><b>Other:</b><br><input type="checkbox"/> Members' Assistance (MA)<br><input type="checkbox"/> Handyman<br><input type="checkbox"/> General Volunteering (GV)<br><input type="checkbox"/> Other Skills or Talents (Z)<br>Please list on back | <input type="checkbox"/> Planning & Development (PD)<br>and/or its Subcommittees:<br><input type="checkbox"/> Escarpment (ES)<br><input type="checkbox"/> Heritage (H)<br><input type="checkbox"/> Playground (PG)<br><input type="checkbox"/> Parkdale School (PS)<br><input type="checkbox"/> Traffic and Parking (TP)<br><input type="checkbox"/> Tree Huggers (TH) |  |
| <b>Public Programs</b><br><input type="checkbox"/> Arts and Crafts Fair (AC)<br><input type="checkbox"/> Other (OT) _____  |   | <b>Service Enablers</b>  |  |
| <b>PCA Newsletter</b><br><input type="checkbox"/> Editorial Panel (NE)<br><input type="checkbox"/> Delivery Routes (ND)  | <b>PCA Governance &amp; Admin</b><br><input type="checkbox"/> Board of Directors (D)<br><input type="checkbox"/> Memberships/Canvasser (MB)   | <input type="checkbox"/> Casino and/or Fundraisers (C)<br><input type="checkbox"/> Grants and Donations (GR)<br><input type="checkbox"/> Facilities Rentals (FR)<br><input type="checkbox"/> Marketing & Website (MW)  |  |

The Parkdale Community Association respects the privacy of its members and shall not disclose, distribute or rent its e-mail subscriber news list to any third party, nor shall it permit anyone else to do so. Members will only be contacted for providing community-related information or volunteer opportunities they have indicated on this form.

I agree that my contact information may be used for the sole purposes of community information provision or volunteer opportunities.

---

# **Parkdale Farmers' Market**

**Wednesdays**

**2:30 to 6:30**

**Year**

**Round**



**3512—5 Avenue NW**



# PARKDALE COMMUNITY ASSOCIATION (PCA)

3512 - 5th Avenue NW, Calgary AB, T2N 0V7  
 Tel: (403) 283-5767 E-mail: office@parkdalecommunity.com

## TIME BLOCK RENTALS AND BASE RENTAL RATES

| TIME BLOCKS<br>(Minimum rental period/cost, i.e., no partial blocks fees allowed)  | REQUIRE?<br>Y=Yes | RENT<br>FEES | RENTAL COST<br>ESTIMATE   |                 |                |
|--|-------------------|--------------|---|-----------------|----------------|
| <b>Weekday Time Blocks</b>   |                   |              |   |                 |                |
| Mon; Tue; Wed; and/or Thu (Strike out days not wanted)   |                   |              |   |                 |                |
| Morning (8 am to 12 noon)  |                   | \$225        |   |                 |                |
| Afternoon (1 pm to 5 pm)   |                   | \$225        |   |                 |                |
| Evening (6 pm to 11:30 pm*)  |                   | \$225        |   |                 |                |
| All day (8:00 am to 1:00 am*)  |                   | \$500        |   |                 |                |
| * Extra late charges of \$60 per hour apply beyond these closing hours   |                   |              |   |                 |                |
| <b>Weekend Time Blocks:</b>  |                   |              |   |                 |                |
| Fri; Sat; and/or Sun (Strike out days not wanted)  |                   |              |   |                 |                |
| Morning (8 am to 12 noon)  |                   | \$250        |   |                 |                |
| Afternoon ( 1 pm to 5 pm)  |                   | \$250        |   |                 |                |
| Evening ( 6 pm to 1 am *)  |                   | \$550        |   |                 |                |
| All Day (8 am to 1 am*)  |                   | \$700        |   |                 |                |
| * Extra late charges of \$60 per hour apply beyond these rental hours  |                   |              |   |                 |                |
| <b>EXTRA SERVICES</b>  |                   |              |   |                 |                |
| Kitchen Use: -For Storage Only   |                   | \$75         |   |                 |                |
| -Full Use of Kitchen   |                   | \$175        |   |                 |                |
| -Clean Up of Dishes/Utensils by PCA  |                   | \$150        |   |                 |                |
| PCA to Set Up - (Tables and Chairs, etc)   |                   | \$75         |   |                 |                |
| PCA to Take Down (Tables and Chairs, etc)  |                   | \$75         |   |                 |                |
| PCA to Open and/or Lock Up (Fee also charged if PCA responds to alarm)   |                   | \$100        |   |                 |                |
| Sound Equipment – Public Address System  |                   | \$70         |   |                 |                |
| Sound Equipment – Basic System   |                   | \$85         |   |                 |                |
| Sound Equipment – Enhanced System  |                   | \$250        |   |                 |                |
| Bouncy Castle (Children's Party)   |                   | \$25         |   |                 |                |
| Rehearsal Hall A or B  |                   |              |   |                 |                |
| Elevator   |                   | \$20         |   |                 |                |
| Security Guard (Mandatory requirement if alcohol is being served)  |                   | \$27.50/hr   |   |                 |                |
| Cleaning Fee (If Rentee hires PCA to clean)  |                   | \$200        |   |                 |                |
| Other Requests/Requirements (Please specify)   |                   |              |   |                 |                |
| <b>SUB-TOTAL ESTIMATED FEES FOR RENTAL (CONTRACT)</b>  |                   |              | <b>\$ XXX</b>   |                 |                |
| <b>Cleaning Fee/Damage Deposit (Refundable if Facility is left undamaged, and cleaned to satisfaction of PCA)</b>  |                   |              |   |                 |                |
|  |                   | \$200        |   |                 |                |
| <b>Additional Damage Deposit for Rentals if alcohol is served</b>  |                   |              |   |                 |                |
|  |                   | \$500        |   |                 |                |
| <b>TOTAL INCLUDING ALL DEPOSITS</b>  |                   |              | <b>\$XXX</b>  |                 |                |
| <i>Refund Policy: Should the Rentee cancel their contract within 30 days or less of any booked use, the Rentee will forfeit their reservation deposit.</i>               |                   |              |   |                 |                |
| <b>Are you serving Alcohol?</b> (Renter is responsible for obtaining Liquor Permit, supplying of alcohol, bartenders/custodians, and complying with Alberta Liquor laws) |                   |              | <table border="1"> <tr> <td><b>Yes</b><br/>◇</td> <td><b>No</b><br/>◇</td> </tr> </table> | <b>Yes</b><br>◇ | <b>No</b><br>◇ |
| <b>Yes</b><br>◇  | <b>No</b><br>◇    |              |   |                 |                |





# Advertising in the PCA Newsletter

## Frequency of Publication and Distribution

(1) The Parkdale Community Association (PCA) Newsletter will be regularly published and distributed at least six (6) times a year, in the first or second week of January, March, May, July, September, November. If the newsletter is not received by the 15 day of the issue month, please contact your editor at 270-8579 or by e-mail (wingd@telus.net).

(2) Special issues of the newsletter may be published and distributed in between regular editions to deal with time-sensitive, high impact information.

(3) The deadline for regular newsletter submissions will be the 10th of each month prior to issue month, e.g., February 10 for March issue.

(4) The PCA Newsletter will be distributed to all residences, institutions, and commercial establishments within Parkdale boundaries. It will also be delivered to "West Park", the portion of West Hillhurst west of Crowchild Trail NW to 28 Street NW. The circulation is approximately 1,600.

(5) Each issue of the PCA Newsletter will also be posted on the PCA portion of the Federation of Calgary Communities (FCC) website (<http://www.calgaryarea.com/nw/parkdale/parkdale.htm>).

(6) The newsletter is printed in black and white but the online version is in colour.

## Classified Ads

"Classified Ads" are reserved for private individuals residing within the Parkdale Community Newsletter distribution area wishing to advertise a product or service. The rates charged (plus G.S.T.) are \$10.00 for PCA members and \$15.00 for non-members for ads up to three lines. Additional lines are \$5.00 per line up to a maximum of 50 words per ad. There will be no charge for lost and found ads. A maximum of two (2) ads an issue will be allowed to any individual or group. The deadline for classified ads is 5:00 pm on the 10th day of the month prior to issue month.

## Commercial Ads

Only "copy ready" advertising will be accepted. Rates for "copy ready" advertising are outlined in the table at the bottom of this column. Advertisers are to submit their advertising to the PCA Office, along with payment, by the submission deadline.

## MONTHLY RATES (PLUS G.S.T.)

| PAGE SIZE                                     | 1-2 ISSUES | 3-5 ISSUES | 6-12 ISSUES |
|---|------------|------------|-------------|
| FULL (10 x 7.5"; H x W).....                  | \$230.00   | \$185.00   | \$170.00    |
| HALF (4.75 x 7.5").....                       | 135.00     | 110.00     | 100.00      |
| QUARTER (4.75 x 3.5").....                    | 90.00      | 75.00      | 65.00       |
| EIGHTH (BUSINESS CARD SIZE)....<br>(2 x 3.5") | 60.00      | 50.00      | 40.00       |



## Photo Credits

The icon picture for the Saturday Night Fever notice on page 2 was provided courtesy of Tanya Massey.

The picture from the 2011 Extraordinary Day on page 3 was supplied courtesy of Kara Hallett.



## Calendar of Events

### Upcoming Events

- Parkdale Farmers' Market Grand Re-opening, 2:30 - 6:30 pm, Wednesday, January 22, 2014, PCA
- Saturday Night Fever, 7:00 pm, Saturday, February 1, 2014, PCA
- Community Engagement Event, Garden Committee, 3:00 - 8:00 pm, Thursday, February 6, 2014, PCA
- Garden Committee Fundraising Party, Saturday, March 15, 2014, PCA

### Ongoing Events

- Alcoholics Anonymous - Daily (call for details 283-5767)
- Zumba Classes - Thursday Evenings 8:15 pm.
- Ballroom Dance Lessons - Monday and Tuesday Evenings (call for details 220-0049)
- Youth Theatre - (call for details 283-4622)
- PCA Board Meeting  
Last Tuesday of every month (except July, August and December) starting at 7:00 pm, Main Hall, PCA Complex
- PCA Planning & Development Committee  
Second Tuesday of every month (except July, August, and December) starting at 7:15 pm, Main Hall, PCA Complex - residents welcome
- Indoor Farmers' Market  
Every Wednesday from 2:30 - 6:30 pm, PCA Complex